

Source: Austroads National Performance Indicators



Herald Sun

Your guide to

Melbourne's

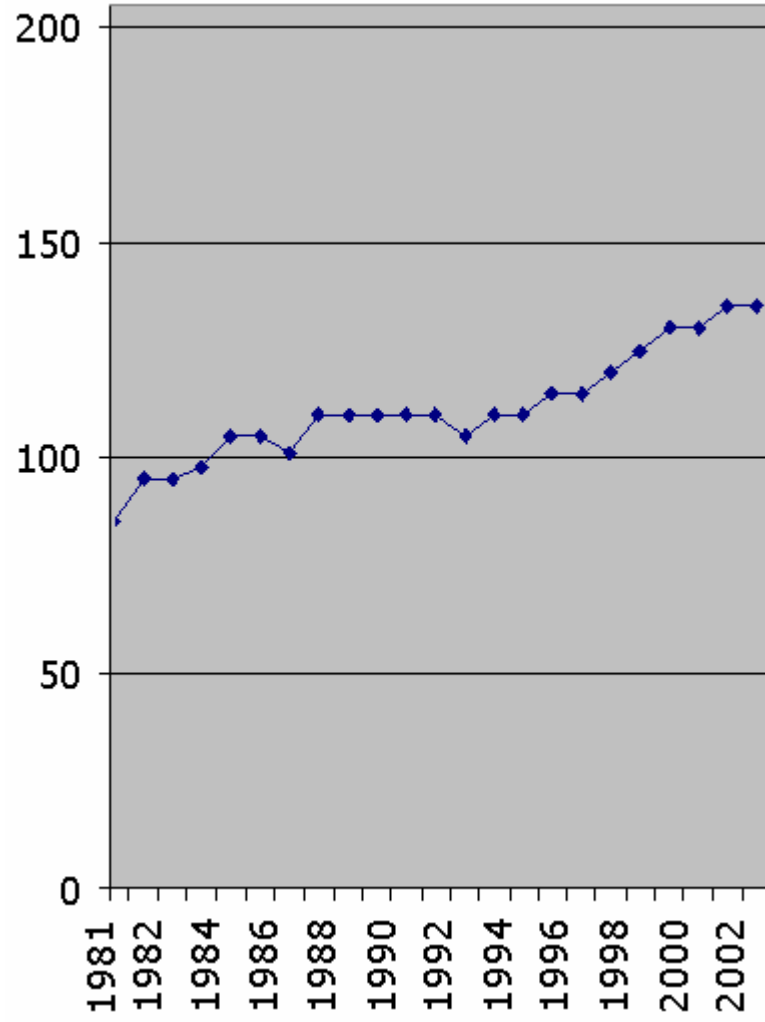
new-age

non-stop

expressway

CITYLINK

The all new **CityLink**
by Transurban 



Train Use in Melbourne, 1946-2003

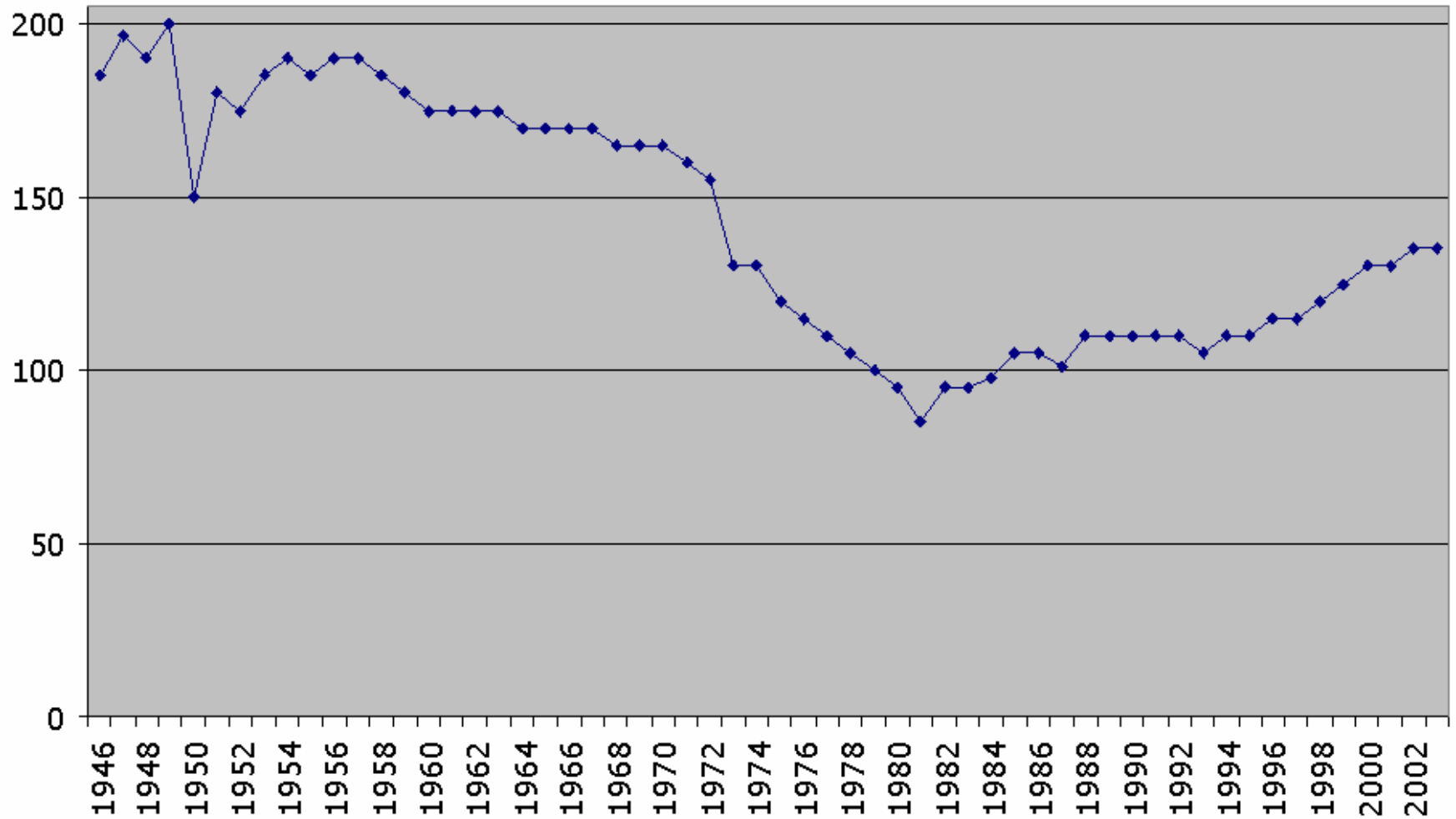
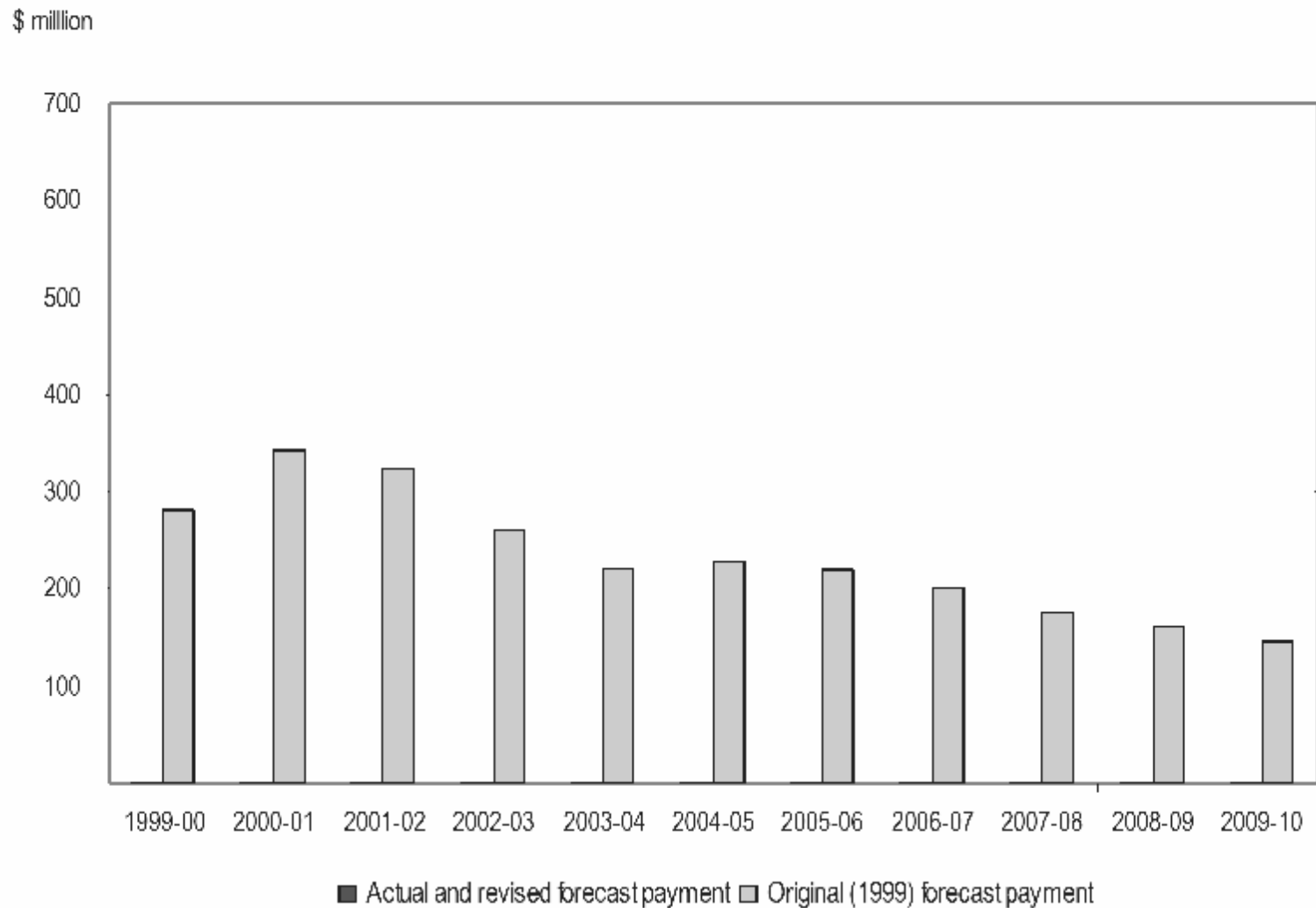
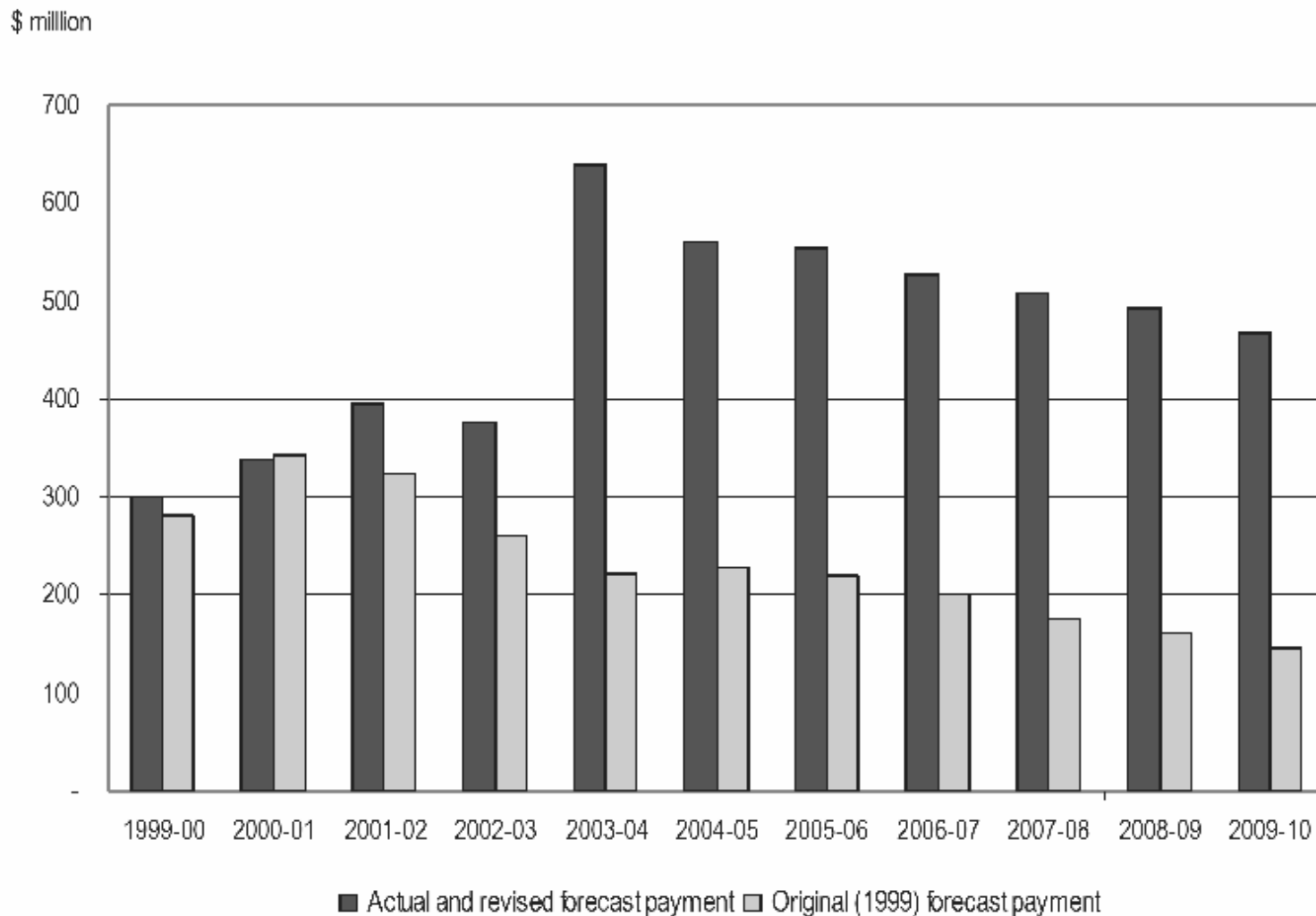


FIGURE 2E: MELBOURNE'S TRAIN AND TRAM PAYMENT PROFILE (2004-05 REAL DOLLARS) – PAYMENTS TO FRANCHISEES



Source: Victorian Auditor General (2005) Franchising Melbourne's Train and Tram System, Parliament of Victoria, Sept. p.25

FIGURE 2E: MELBOURNE'S TRAIN AND TRAM PAYMENT PROFILE (2004-05 REAL DOLLARS) – PAYMENTS TO FRANCHISEES



Source: Victorian Auditor General (2005) Franchising Melbourne's Train and Tram System, Parliament of Victoria, Sept. p.25

